



1. We are likely to find such a notice in ....

- A. a polluted lake.
- B. a private pool.
- C. a hot spring.
- D. a water park.

**TicWatch E Smartwatch**

Review by: Chadwick Bestbuy

Rating: ★ 4.5/5

I have used the TicWatch E Smartwatch every day for one year, and it is better than I expected for its low price. The watch is light and comfortable, so I can wear it all day, even when I exercise. I bought it because I often leave my phone in my office, and this watch helps me stay connected. I can read and reply to messages, listen to music, make calls, and set a timer — all from my wrist.

The system, called Wear OS, is simple to use. I like that I can change the watch face or the band anytime. The only problem is the battery. I need to charge it every night, but it doesn't take long to charge.

The original band works fine, but I changed it to a leather one because it feels nicer. The watch works very well for its price, and it's almost as good as some expensive watches. It doesn't have NFC, but that's okay because I usually pay with my phone.

I also told my friends about this watch, and they like it too. If you want a good smartwatch that's not too expensive, the TicWatch E is a great choice. It has many useful features for daily life. I'm happy with my purchase and may buy the next version in the future.

2. Why did the writer write about the TicWatch E Smartwatch?

- A. To promote it as the best smartwatch.
- B. To compare it with another smartwatch.
- C. To highlight its user-friendly OS interface.
- D. To discuss the pros and cons of the smartwatch.

3. Decide whether each statement is true or false,

No.	Statements	True	False
A	The watch is lightweight and comfortable for all-day wear.		
B	The battery needs to be charged daily with regular use.		
C	The watch has impressive functionality for its price		

I was born in the southern part of China. I grew up in a small village that was populated by about thirty people. When I was nine years old, my family moved to the United States. At first, I did not know any English. I started learning English in a special class for new students. After one year, I could read, write, and speak English much better. I became friends with students who spoke English, and my skill improved even more.

My love for math and chemistry in school led me to study chemical engineering in college. After graduation, I started working. The work was busy, and I began to forget about my health. I gained weight and felt tired. When I noticed my senior workers lived unhealthy lifestyles, I was motivated to change.

I started running every day. My new fondness for jogging caused me to sign up for a half marathon. After that, I ran a full marathon. Now, I am training to join an *Ironman race*. As I dived deeper into improving my health, I discovered the love to make other areas of my life better, too. It includes relationships, finances, and my professional career. I started reading books, listening to podcasts, and watching talks to learn new things. The most important lesson I learned is to use my knowledge and practice it every day.

I want to be the best version of myself. By taking full responsibility for my life, I can create the life of my dreams.

4. What is the purpose of the text?

- A. To suggest that readers move to the United States for a better life.
- B. To encourage readers to keep improving and take positive action.
- C. To remind readers about the importance of work-life balance.
- D. To motivate students to master English as the key to success in life.

5. Which statements are true based on the text?

- The writer came from a rich Chinese family.
- The writer is a hardworking and determined person.
- The writer managed to adapt to new countries and culture.
- The writer has learned English before moving to the United States.

### ***Harry Potter and the Sorcerer's Stone***

**By Glorious Victory**

**Date: 17 October 2025**

*Harry Potter and the Sorcerer's Stone* is a book about magic. The story is about a boy named Harry Potter. He lives with his aunt and uncle. They are not nice to him. When Harry is 11 years old, he learns he is a wizard. He goes to a school called Hogwarts to learn magic.

At his school, Harry meets two good friends. Their names are Ron and Hermione. They learn magic together. They play a special game while flying. They also learn many strange things. Harry learns that a bad wizard named Voldemort killed his mom and dad. Harry and his friends try to stop Voldemort. Voldemort wants to take a magic stone with special power.

This book is great for young readers who like stories about magic. It shows that friends should help each other and be brave. The story also teaches us to be kind and do good things. The words are simple and easy to read. It is a very good book for children who love magic stories.

★ **Rating: 5/5 stars**

**Best part:** When Harry plays Quidditch for the first time!

6. What is the main idea of the last paragraph?

- A. The story talks about magic and adventure.
- B. The language in the book is easy to understand.
- C. The book teaches the readers to be loyal and kind.
- D. The book is enjoyable and suitable for young readers.

7. Which statements are true based on the text?

- The language in the book is simple and easy to understand.
- The book is inspiring because it is full of meaningful values.
- The story focuses only on Harry's life with his aunt and uncle.
- The book mainly teaches readers about science and technology.

Read the following texts.

TEXT A

**16G PROTEIN**      **100 CALORIES**  
per packet



**Chicken of the Sea.**

**WILD CAUGHT**  
**SMOKED**  
**ALASKAN PINK SALMON**  
SKINLESS, BONELESS & LIGHTLY SEASONED

**MAPLE SMOKEHOUSE**



**ALASKA SEAFOOD**

NET WT. 3 OZ (85g)

**Chicken of the Sea.**

**ENJOY DELICIOUS, PROTEIN PACKED SALMON...ON-THE-GO!**

We gave our wild-caught Alaskan pink salmon a brunch-worthy makeover, courtesy of our on-site smoker and delicious maple syrup. The craveable sweet n' smoky flavor is packed with omega-3s and lean protein. Serve it at your next brunch, or grab a fork and dig into the packet anywhere your healthy lifestyle takes you.

Find great recipes at [www.chickenofthesea.com](http://www.chickenofthesea.com)









**Nutrition Facts**  
1 serving per container  
Serving size 1 packet (85g)

Amount per serving		<b>Calories 100</b>	
		% Daily Value*	
<b>Total Fat</b>	1.5g		2%
Saturated Fat	0.5g		3%
Trans Fat	0g		
<b>Cholesterol</b>	40mg		13%
<b>Sodium</b>	480mg		21%
<b>Total Carbohydrate</b>	6g		2%
Dietary Fiber	1g		4%
Total Sugars	5g		
Includes 5g Added Sugars			10%
<b>Protein</b>	16g		29%
Vitamin D	8mcg 40%	Calcium	16mg 2%
Iron	0.4mg 2%	Potassium	296mg 6%

\* The % Daily Value (DV) tells you how much a nutrient in a serving of food contributes to a daily diet. 2,000 calories a day is used for general nutrition advice.

INGREDIENTS: SMOKED PINK SALMON, PINK SALMON, SALT, BROWN SUGAR, MAPLE SYRUP, WATER, LESS THAN 2% OF GARLIC POWDER, ONION POWDER, SALT, SUGAR, SPICES, NATURAL SMOKE FLAVOR AND OTHER NATURAL FLAVORS, PAPRIKA OLEORESIN (COLOR), GUAR GUM, MODIFIED FOOD STARCH (TAPIOCA), CONTAINS SALMON.

DISTRIBUTED BY: CHICKEN OF THE SEA INTERNATIONAL, EL SEGUNDO, CA 90245 U.S.A. PRODUCT OF THAILAND. © 2023 Chicken of the Sea Intl. All Rights Reserved.

TEXT B

**Great Value.**

**Skinless & Boneless Smoked Pink Salmon**

**14g PROTEIN**  
**70 CALORIES**  
Per Pouch

**WILD CAUGHT**



**MSC**  
www.msc.com

NET WT 2.5 OZ (71g)

**Great for any occasion**







**Nutrition Facts**  
1 serving per container  
Serving size 1 pouch (71g)

Amount per serving		<b>Calories 70</b>	
		% Daily Value*	
<b>Total Fat</b>	1g		1%
Saturated Fat	0g		0%
Trans Fat	0g		
<b>Cholesterol</b>	25mg		8%
<b>Sodium</b>	310mg		13%
<b>Total Carbohydrate</b>	<1g		0%
Dietary Fiber	<1g		2%
Total Sugars	0g		
Includes 0g Added Sugars			0%
<b>Protein</b>	14g		
Vitamin D	6.8mcg 35%*	Calcium	10mg 0%
Iron	0.2mg 0%	Potassium	180mg 4%

\* The % Daily Value (DV) tells you how much a nutrient in a serving of food contributes to a daily diet. 2,000 calories a day is used for general nutrition advice.

INGREDIENTS: SALMON, WATER, MODIFIED FOOD STARCH, VEGETABLES BROTH (PEAS AND CARROT EXTRACT), SALT, NATURAL SMOKE FLAVOR.

CONTAINS SALMON. DISTRIBUTED BY: Walmart Inc., Bentonville, AR 72716 PRODUCT OF THAILAND

8. Which conclusions are supported by the labels?  
Decide whether the statements are TRUE or FALSE.

#	CONCLUSIONS	TRUE	FALSE
A	Chicken of the Sea has higher energy per serving.		
B	Great Value provides more protein for each package.		
C	Great Value is more suitable for those on a low-sodium diet.		

9. What information can you get from both labels?

Choose more than one correct answer.

- The products offer cooked salmon.
- Both products present the wild salmon.
- Great Value highlights the fresh salmon.
- Chicken of the Sea provides raw salmon.

**Read the following text.**



Stalactites and stalagmites are unique formations found within many caves. They are long, pointed shapes that grow very slowly. We can see them in several caves in Yogyakarta, such as Goa Pindul, Goa Jomblang, and Goa Cerme. These cave rocks are very beautiful, and many people visit to take photos. Stalactites hang from the ceiling of the cave, while stalagmites grow from the floor. Sometimes, a stalactite and a stalagmite can meet and form one big pillar. These rocks show

that nature works slowly and carefully over many years.

Stalactites are formed from drops of water. When rainwater enters the cave through small holes in the ceiling, it carries minerals with it. One important mineral is calcium. The water drops hang on the ceiling and leave a small amount of calcium each time. After many years, the calcium becomes hard and grows downward. This long, thin shape is called a stalactite. It takes a very long time to form, sometimes hundreds of years.

Stalagmites are formed similarly, but they grow from the ground. When the water drops fall from the stalactite above, they land on the cave floor. The water leaves minerals there too. Slowly, the minerals build up and grow upward. After many years, a tall shape forms. This is called a stalagmite. If a stalactite and a stalagmite join, they make a strong stone column.

10. Which of the following statements go with the text?

Choose more than one correct answer.

- A. Both stalactites and stalagmites form in a short time.
- B. Water drops help the formation of both rocks.
- C. Stalactites grow from the cave floor.
- D. Stalagmites point down like icicles.

11. The first paragraph tells us about ... of stalactites and stalagmites.

- A. the unique shape
- B. the forming process
- C. the specific information
- D. the general description

12. What conclusions can we draw from the text?

Decide whether the following statements are TRUE or FALSE.

#	STATEMENTS	TRUE	FALSE
A	Most caves in Yogyakarta contain stalactites and stalagmites.		
B	The rock structures in the cave attract nature enthusiasts.		
C	Calcium plays a key role in forming the rock structures.		

Read the text carefully.

When I was in elementary school, I was a small and quiet girl. Many students around me were bigger and taller. Because of that, some older students often bullied me. They laughed at my size, hid my stationery, and sometimes pushed me gently but on purpose. At first, I felt very scared. I tried to avoid them and stayed close to my classroom. Every day, I went to school feeling nervous and worried about what might happen.

I kept my fear to myself for a long time. I thought telling someone would only make things worse. One afternoon, I came home with tears in my eyes. My mother noticed right away and asked me what was wrong. When I told her everything, she listened patiently and comforted me. She told me that being small did not mean I had no strength. Her words made me feel supported and less alone.

The next day, I decided to be braver. When the bullies came again, I looked at them and told them to stop. My hands were shaking, but I stayed calm. I also talked to my teacher, who promised to help and keep an eye on the situation. Slowly, the bullying began to decrease.

...

13. Based on the text, the fourth paragraph can probably be about the writer's ....

- A. efforts in making her friends accept her presence
- B. days with a better relationship with her friends
- C. struggle in facing her fear in classroom
- D. moment when she was bullied again

14. From the text, we know that ....

- A. The bullies probably stopped because the teacher punished them.
- B. It was difficult for the writer to speak up, so she chose to be silent.
- C. The bullies chose the writer because they were jealous with her.
- D. The writer became stronger emotionally by the end of the story.

15. State true or false in every statement.

	Statements	True	False
A	The writer was a confident and smart girl.		
B	The writer's mother was wise and encouraging.		
C	The writer's teacher was caring and helpful.		

Read the text carefully.

In a faraway kingdom surrounded by blue hills, there lived a young princess named Jasmine. Although she wore fine clothes and lived in a grand palace, her heart was simple. She greeted servants by name and thanked them with a gentle smile. Every morning, she

walked through the palace halls and nearby streets, asking people about their days. To her, kindness mattered more than praise.

Not everyone admired her ways. Lord Bane, a proud noble who loved power and attention, believed the princess was weak. He mocked her for speaking to common people and bowing politely. "A ruler should stand above others," he said loudly. Behind her back, he spread rumours that she was unfit to lead because she did not act superior.

One day, Lord Bane tried to embarrass the princess during a royal gathering. He asked her to prove her greatness. Instead of boasting, Princess Jasmine stepped down from the throne and helped an elderly gardener who had fallen. The hall grew quiet. People saw her calm hands and sincere care. Without a single proud word, she showed her strength.

In time, the king grew old, and the people supported Princess Jasmine as their leader. Lord Bane's pride faded, but her modesty remained. She ruled wisely, never lifting herself above others, and the kingdom prospered in peace and trust.

16. Which of the following outlines show the correct events orderly?

A	(1) Princess Jasmine walked through the palace. (2) Everyone admired Princess Jasmine. (3) Lord Bane mocked Jasmine for speaking to common people. (4) Princess Jasmine showed her kindness.
B	(1) Princess Jasmine often greeted the servants and other people. (2) Lord Bane mocked Jasmine for speaking to common people. (3) Princess Jasmine showed her kindness. (4) Princess Jasmine ruled the kingdom.
C	(1) Princess Jasmine liked to wear fine clothes. (2) Princess Jasmine often greeted the servants and other people. (3) Lord Bane spread a rumour about Princess Jasmine. (4) Princess Jasmine ruled the kingdom.
D	(1) Princess Jasmine lived in a grand palace. (2) Lord Bane spread a rumour about Princess Jasmine. (3) Princess Jasmine ruled the kingdom. (4) Princess Jasmine showed her kindness.

17. Which of the following is true based on the text?

- A. Princess Jasmine and Lord Bane were members of the royal family.
- B. Princess Jasmine wanted to rule the kingdom, but Lord Bane didn't.
- C. Lord Bane was humble but Princess Jasmine was arrogant.
- D. Lord Bane was modest but Princess Jasmine was proud.

18. Which statements are good lessons of the story?

- Be humble even when you have power or status.
- Don't boast about your abilities or position.
- Try to defeat others to be the best.
- Don't let others underestimate us.

Creating a poll on WhatsApp is a fun and easy way to ask questions and see what your friends or group members think. You can use it to make decisions, collect opinions, or just have fun. Here are three simple steps to help you get started:

**Step 1: Open a chat or group**

First, open WhatsApp on your phone. Then, choose the chat or group where you want to make the poll. You can create a poll in a private chat or a group chat.

**Step 2: Create your poll**

Tap the **attachment icon** or **plus (+)** icon, depending on your phone. Then select **“Poll.”** Type your **question** in the top box. Below it, add your **options** — you can add more than one answer choice. For example, if your question is “What time should we meet?” your options could be “2 PM,” “3 PM,” or “4 PM.”

**Step 3: Send your poll**

After checking your question and options, tap **“Send.”** Your poll will appear in the chat, and everyone can vote by tapping their choice. You can see the results in real-time as people vote.

Now you’ve created your first WhatsApp poll.

19. The writer’s intention in writing the text is to ....
- A. persuade readers to make a poll about WhatsApp
  - B. explain the steps to make a poll on WhatsApp
  - C. inform readers how to fill in the poll in WhatsApp
  - D. entertain readers with funny WhatsApp stories

20. Which statements are true based on the text?
- Users can create polls only in group chats.
  - The poll can include more than one option to choose from.
  - People can vote by tapping the option they choose in the chat.
  - The results will appear only after all people have voted.

[Verse 2]

Don't expect a free ride from no one  
Don't hold a grudge or a chip and here's why  
Bitterness keeps you from flyin'  
Always stay humble and kind  
Know the difference between livin' with someone  
And livin' with someone you love

[Chorus]

Hold the door, say please, say thank you  
Don't steal, don't cheat, and don't lie  
I know you got mountains to climb but  
Always stay humble and kind  
When those dreams you're dreamin' come to you  
When the work you put in is realized  
Let yourself feel the pride but  
Always stay humble and kind (Yeah)

[Outro]

When it's hot, eat a root beer Popsicle  
Shut off the AC and roll the windows down  
Let that summer sun shine

Always stay humble and kind  
 Don't take for granted the love this life gives you  
 When you get where you're goin', don't forget turn back around  
 And help the next one in line  
 Always stay humble and kind

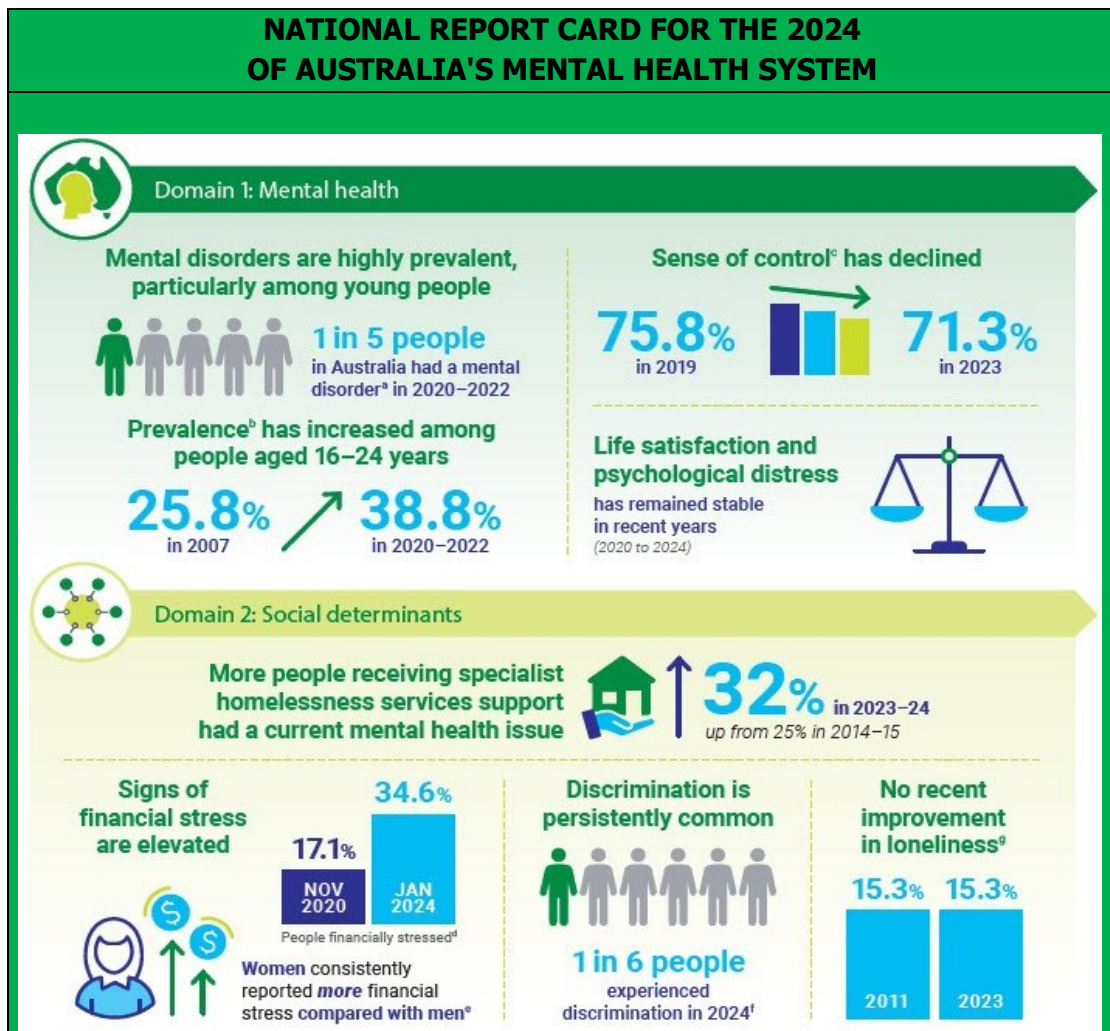
21. Based on the lyrics, the songwriter acts as ...

- a motivator who inspires people to live kindly and sincerely.
- a critic who focuses about people's wrong attitudes.
- a parent who gives gentle advice about living well.
- a friend who laughs at people's careless mistakes.

22. What is the moral value of the song lyrics?

- A. We should work hard and feel proud of what we achieve.
- B. We should forgive others and enjoy simple things in life.
- C. We should stay respectful, honest, and good to others.
- D. We should always try to be better than everyone else.

Read the text.



23. Which statement is in line with the text?

- A. Australians' sense of control weakened 4.5% from 2019 to 2023.
- B. Mental disorder prevalence among youngsters declined from 2007 to 2022.
- C. Fifty percent of people in Australia had a mental disorder in 2020–2022.
- D. Life satisfaction and psychological distress increased between 2020 and 2024.

24. What is the main purpose of the infographic?

- A. To explain how mental disorders can be treated in Australia.
- B. To compare Australia's mental health system with other countries.
- C. To persuade Australian young people to seek mental health services.
- D. To show the national report of Australia's mental health system in years.

25. Decide whether each statement below is TRUE or FALSE.

#	STATEMENTS	TRUE	FALSE
A	monetary stress among Australian women has lessened for four years		
B	mental health issues among young people have become more common over time		
C	discrimination and homelessness have continued to significantly affect mental health		

Text A

**Japan - Hong Kong**  
4 nights cruise

Embark on an unforgettable journey as we sail through the enchanting waters of Japan and Hong Kong. Join us on our exclusive 4-night cruises, where every moment is a new adventure waiting to unfold.

**\$900 /person**

**Inclusions:**

- On-board accommodation
- Meals
- Entertainment
- Facilities on board

**Sailing dates:**

- June 10th -
- June 16th -
- June 22nd -
- June 28th -

Explore two incredible worlds in one unforgettable journey. Luxurious cabins, gourmet dining, and stunning views await. Book your sea adventure now!

+123 456 7890 | www.reallygreatsite.com

Text B

**SUMMER**  
Cruise Party

Join us for an unforgettable night of music, dancing, and fun on board our luxury cruise ship!

**SUNDAY, JUNE 25TH 2024**

Admission: \$50 / person    Boarding at 7:00 PM    Cruise Departs at 8:00 PM

Book now and enjoy early bird discounts, exclusive merchandise, and surprises that will make your summer cruise even more memorable.

FOR RESERVATION, PLEASE CALL 123-456-7890

26. Which statement is true based on the text?

- A. Text B offers a 4 night cruise from Japan to Hongkong.
- B. Text 4 offers a party on a cruise in one day and one-night trip.
- C. Both advertisements offer a special discount for the customers.
- D. People will get some benefits if they reserve summer cruise party earlier.

27. Who will probably be interested in reading the text?

- A. Individuals who prioritize low-cost travel and have limited time for distant journeys.
- B. Those who want to experience a unique situation and journey on a luxury ship.

- C. People who seek exclusive services and first-class voyage with limited budget.
- D. Those who prefer a domestic travel experience with common adventures.

### Screen Zombies: The Digital Obsession

In today's digital age, technology has become an essential part of daily life. However, excessive screen use has led to the rise of "screen zombies". It refers to a phenomenon of individuals who are so absorbed in their digital devices that they become unaware of their surroundings. This phenomenon affects social interactions, productivity, and even safety.

One of the factors that contribute to the rise of screen zombies is the anxiety of missing important information or events. It leads to compulsive screen checking. This makes someone constantly need to check notifications, messages, and updates. It keeps people glued to their screens. People also need the availability of endless content on streaming platforms, video games, and online videos which encourages prolonged screen use. Furthermore, people prefer texting and social media over face-to-face interactions. It has an impact on their real-world engagement.

Excessive screen use has several negative consequences. Constant distractions from notifications can lead to decreased efficiency in work and studies. It will also contribute to eye strain, poor posture, and sleep disturbances. Prolonged screen exposure can negatively impact mental well-being, contributing to anxiety, depression, and digital dependency.

28. What does the second paragraph talk about?
- A. Several aspects of reducing prolonged screen exposure.
  - B. Impacts of excessive screen use on their real-world engagement.
  - C. The main factor contributing to the increase in screen dependency.
  - D. The fear of missing important updates leading to face-to-face interactions.

29. Decide whether each statement is true or false.

	Statements	True	False
A	Overdependence on screens is associated with technological addiction.		
B	The anxiety of missing information results in frequent screen engagement.		
C	Individuals prioritize direct interactions over messaging to increase efficiency.		

30. After reading the text, the readers are inspired to ....
- A. optimize digital usage to foster a balanced lifestyle
  - B. focus on digital communication to increase productivity
  - C. reduce scrolling on social media to maintain their mental health
  - D. enhance proficiency in academics or career to minimize screen time